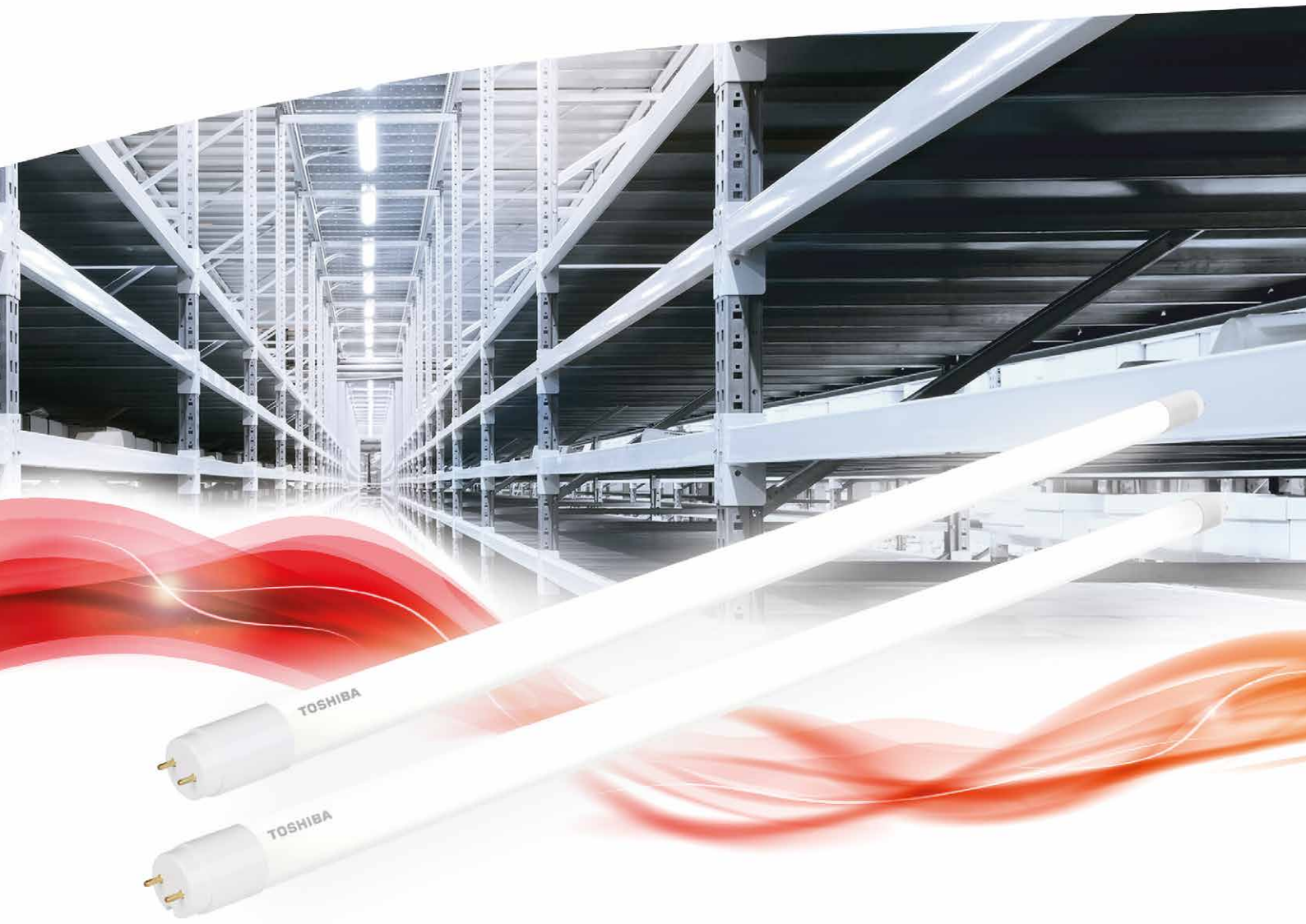


TOSHIBA

Leading Innovation >>>



Toshiba LED TUBES

- the easiest way to save
energy on your installation

11/2014

E-CORE™
LED Lighting

Toshiba LED TUBES

Thanks to their wide LED tube range, Toshiba give you the opportunity to save up to 65% energy on many applications where T8 fluorescent lamps are installed.

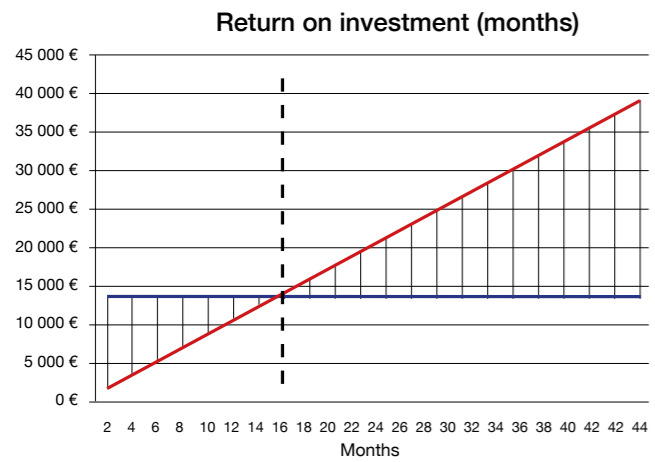
All the requirements of your projects can be met within the Toshiba LED tube offer. From a price and quick return on investment perspective or a performance one, an option exists for you.

Choosing Toshiba tube will bring you efficiency, quality and satisfaction.



Significant facts about our LED TUBE

- 1 Ideal for commercial (sales spaces, cold rooms, common areas, stock and archives room...) and parking applications
- 2 Up to 2,300 lm and 100 lm/W
- 3 Improved design: homogenous and wide light distribution along the whole tube length
- 4 Very efficient: up to A+
- 5 Long life time: 40,000 hours

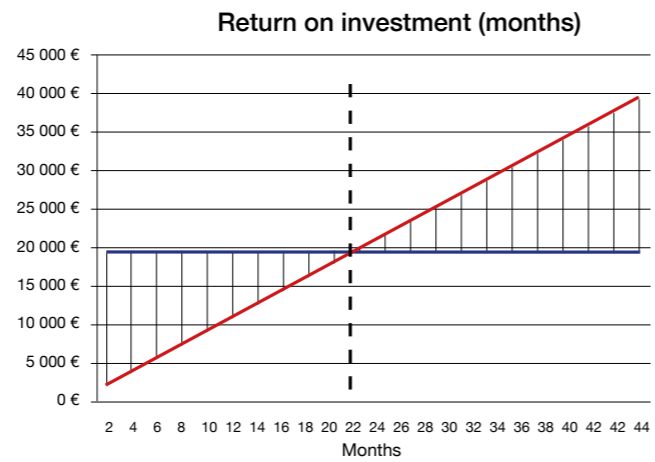


- Example of calculation
- Based on an average european cost of energy of 0,16 €/kWh

— Saving — Initial investment

Significant facts about our E-CORE HIGH LUMEN TUBE

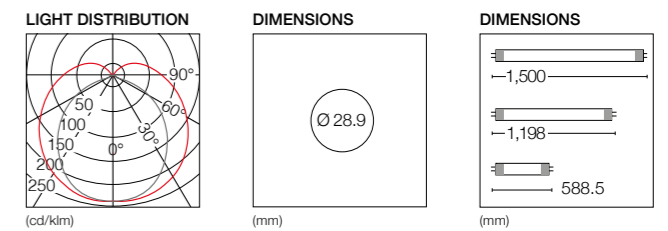
- 1 Ideal for high ceilings in commercial (sales spaces, cold rooms, common areas, stock and archives room...) and industrial applications
- 2 Up to 3,000 lm and 125 lm/W
- 3 Improved design: homogenous and wide light distribution along the whole tube length
- 4 Very efficient: up to A++
- 5 Long life time: 40,000 hours



- Example of calculation
- Based on an average european cost of energy of 0,16 €/kWh

LED TUBE

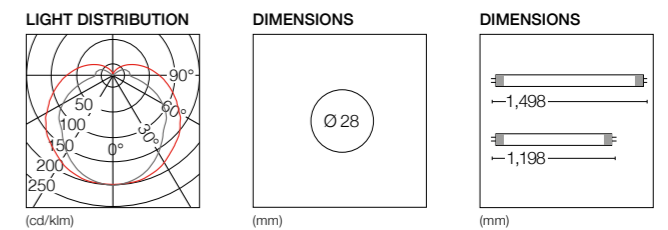
The LED TUBE lets you perfectly light up large rooms and commercial areas. It will ensure bright light and a low consumption of energy. It is available either in neutral white or cold white, in 800 to 2,300 lm.



PRODUCT CODE	RATED WATTAGE	COLOUR TEMPERATURE	LUMINOUS FLUX	OVERALL LENGTH	BEAM ANGLE	DIMMING	CRI	ENERGY LABEL	RATED LIFETIME
LDL003D4072EU	9 W	4000 K	800 lm	604 mm	150°	No	80	A+	40,000 h
LDL003D6572EU	9 W	6500 K	900 lm	604 mm	150°	No	80	A+	40,000 h
LDL003D4074EU	18 W	4000 K	1,700 lm	1,213 mm	150°	No	80	A+	40,000 h
LDL003D6574EU	18 W	6500 K	1,800 lm	1,213 mm	150°	No	80	A+	40,000 h
LDL003D4075EU	23 W	4000 K	2,100 lm	1,513 mm	150°	No	80	A+	40,000 h
LDL003D6575EU	23 W	6500 K	2,300 lm	1,513 mm	150°	No	80	A+	40,000 h

E-CORE HIGH LUMEN TUBE

E-CORE HIGH LUMEN TUBE is your best partner for tube relamping project in any high ceiling applications. Thanks to its high lumen output it enables to save a big amount of energy without compromising on light quality.



PRODUCT CODE	RATED WATTAGE	COLOUR TEMPERATURE	LUMINOUS FLUX	OVERALL LENGTH	BEAM ANGLE	DIMMING	CRI	ENERGY LABEL	RATED LIFETIME
LDL002D3074-EU	23 W	3000 K	2,160 lm	1,198 mm	160°	No	80	A+	40,000 h
LDL002D4074-EU	23 W	4000 K	2,400 lm	1,198 mm	160°	No	80	A+	40,000 h
LDL002D6574-EU	23 W	6500 K	2,400 lm	1,198 mm	160°	No	80	A+	40,000 h
LDL002D3075-EU	24 W	3000 K	2,700 lm	1,498 mm	160°	No	80	A+	40,000 h
LDL002D4075-EU	24 W	4000 K	3,000 lm	1,498 mm	160°	No	80	A++	40,000 h
LDL002D6575-EU	24 W	6500 K	3,000 lm	1,498 mm	160°	No	80	A++	40,000 h



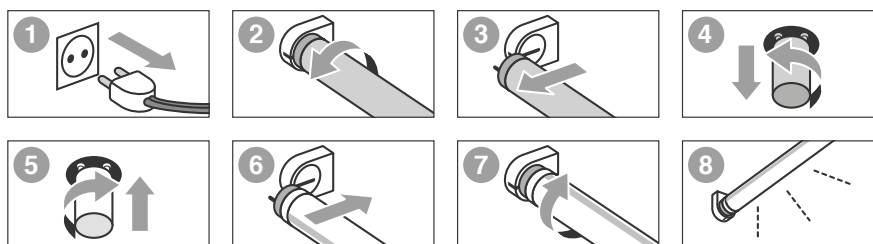
Installation instructions

Retrofitting in a CCG luminaire

The luminaire can still be used for fluorescent lamps when the normal starter is reinstalled. The certification of luminaire remains valid.

Installation Instructions:

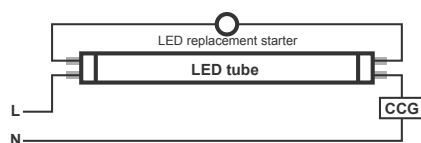
- Make sure if supply voltage and frequency fall within product rating on lamp/package
- Make sure that the supply voltage is disconnected
- Remove the conventional lamp
- Replace the conventional starter to the LED replacement starter delivered with TOSHIBA LED tube
- Insert the TOSHIBA LED tube into lamp holders and check the light distribution angle



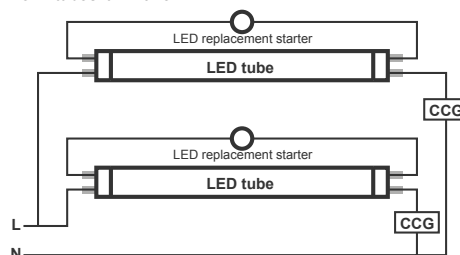
The LED replacement starter in the package is mandatory for operation and safety

Circuit diagram of retrofitted luminaire:

For 1 tube luminaire:



For 2 tubes luminaire:



LED tube only suit parallel mounted ballast. In case a parallel power factor compensation capacitor is used in the luminaire, it will reduce the power factor. Consider that power factor could need to be adjusted according to local regulations.

<http://toshiba.eu/lighting>

For more details about mounting, please check our webpage.

Specifications and design as of November 2014.
Specifications and design may change without further notice.